



SPRING 2018

# GERSTLE PARK Neighborhood Association



## GPNA Calendar

- March 24 - Spring Fling Egg Hunt
- April 28 - Coffee w/Katie Rice
- June 16 - Garage Sale Day
- June 30 - GP Night Pacifics Baseball
- September 23 - San Rafael PorchFest

## Spring Fling

Saturday, March 24th

10:00 am sharp

Gerstle Park Playground



Be there by 9:30 AM with your baskets, cameras, parents, grandparents and extended family to join us in this Gerstle Park ritual. Our Bunny will visit and pose for photos with the children. She will

have already sprinkled the park with candy-filled eggs and special prize notes. This is a fun activity for children 9 and under. Younger children (up to 5 years old) will gently search the playground while older children carefully comb the upper level of Gerstle Park, including the Redwood Grove. This very special Gerstle Park event is not to be missed.

It's a great time to see old friends, meet new families, and renew your membership. Join us for fruit, coffee and pastry! Donations gladly accepted. Volunteers for set-up, egg coloring, serving, and cleanup would be most appreciated! [Click here](#) for photos of last year's Spring Fling!

Please contact: [info@gerstlepark.com](mailto:info@gerstlepark.com)



## Porch Fest

Food, Music & Fun!

Coming to our neighborhood

Sunday Sep 23rd 12-5



The inaugural San Rafael PorchFest is planned for Sunday, September 23rd from noon to 5:00pm.

It's a free event featuring local musicians performing on your neighbor's porches and front

yards throughout the Gerstle Park

neighborhood. PorchFest is a nationwide group of volunteers dedicated to local, free music. San Rafael PorchFest is looking for volunteers, musicians and porches for the event. GPNA is a sponsor and we're looking for additional businesses to participate.

We're creating a family-friendly, neighborhood day of music and fun. P.S. There will be food trucks!

Please contact:

Tom Obletz

415.691.4567

[sanrafaelporchfest@gmail.com](mailto:sanrafaelporchfest@gmail.com)

## Batter Up!

Pacifics Baseball Gerstle Park Night

Saturday, June 30 at 5pm



Join GPNA on Saturday night, June 30th. Game starts at 5:05 PM. The

Pacifics will also be celebrating the 50th Anniversary of the release of the Beatles "White Album". Beatles

tribute band "Nigel & Clive and

the British Invasion" will play. Purchase game tickets starting 4/1 at [www.pacificsbaseball.com](http://www.pacificsbaseball.com). Enter

promo code "gerstle" for \$5 off General Admission.

First 250 fans get free commemorative white t-shirt.

All fans encouraged to WEAR WHITE!

# Sidewalk Repair Program

Applications for FY 2017-18 Sidewalk Repair Program open March 20 - April 24, 2018

Update taken from the City's Website:  
<https://www.cityofsanrafael.org/departments/sidewalk-repair-program/>

In conjunction with the adoption of San Rafael Municipal Code Chapter 11.60, the City Council called for the development of a pilot Sidewalk Repair Program which attempts to share the financial burden associated with sidewalk maintenance between the City and property owners, and streamlines and consolidates sidewalk repairs throughout the City.

Under the new program, the City will split the cost of sidewalk replacement 50-50 (up to a maximum of \$1,000 in City contribution), and cover 100% of the cost of curb and gutter replacement (up to a maximum of \$4,000 City contribution). Additionally, tree work including removal will be done by the City based on review by a City Arborist. It is important to note that driveway aprons are not eligible for cost-share in the program.



The primary purpose of the program is to assist property owners with the following costs associated with sidewalk repairs:

- Concrete sidewalk repair and replacement
- Curb and gutter work required with sidewalk repair and replacement
- Tree work associated with sidewalk repair and replacement (root trimming, stump grinding, removal/ replacement)
- Encroachment permit fees and related inspections

*Additional details from DPW Director Bill Guerin:*  
As mentioned above, applications will be accepted March 20—April 24. Shortly after 4/24 deadline, a “lottery,” with funds allocated for 20 low income property owners, will take place to determine who will be admitted into the program this fiscal year. It is anticipated that roughly 150 properties citywide will be accepted into this year’s program. See application for further details.

## President's Column by Gina Silvestri



Before I joined the GPNA Board, I'll admit that I had lived here for 8 years but still barely knew more than a handful of neighbors, and most of them lived on my block. As you can imagine, being on the Board for the past 6 years increased that number of friends and acquaintances substantially.

Then six months ago, my husband and I got our first dog, a golden retriever puppy named Blue. Puppyhood has brought many challenges (and one black eye!), but one of the unexpected benefits has been meeting all of the great 4-legged residents of Gerstle Park and their friendly, encouraging, and inspirational owners. I love hearing all the “rescue dog” stories and all the pearls of wisdoms many of them have offered me over the past few months. One more reminder of what a cool place this is that we call home!

On February 10th, the 2018 GPNA Board of seven met and established a list of our Goals for the coming year. These included (a) building membership, (b) getting the City to deliver a *Gerstle Park friendly* Tree Policy, (c) acting in ways to promote GPNA and giving people a reason to participate, including developing a digital/social media presence, and (d) partnering with the City in hopes of refurbishing the old tennis court in Gerstle Park.

Your 2018 GPNA Board is energized, dedicated and committed to making our neighborhood the best in San Rafael! We encourage you to reach out to us, get more involved and help us attain these goals.

You can find us next on the morning of March 24th at the Spring Fling Egg Hunt in Gerstle Park.

Happy Spring, everyone!



# Meet the Neighbor

Author Christie Nelson

by Dotty LeMieux



I meet author Christie Nelson in the historic Eastlake Victorian she shares with engineer husband Ron Moore on Greenwood Avenue, not far from Gerstle Park. The property is the site of the once popular and somewhat notorious San Rafael

Brewing Company, which operated from 1871 until 1920. The home is known as “the Brewmeister House,” although first and long-time brewmeister Fritz Goerl and his family lived in the Victorian home only a short time, before moving to another home on the property and renting the stately Victorian to good friends, the Schmidt family. Goerl owned the brewery from 1872 until 1905 when he sold to a group of English brewers. Just months later, Goerl was killed a buggy accident not far from the brewery. For years supplying the only beer in town, the brewery was site of some rollicking parties, barn dances and even operated a beer garden the premises.

Despite complaints from neighbors about unsanitary conditions and noise, and legal troubles related to underage sales and tax problems, the San Rafael Brewery kept on going strong until Prohibition forced its closure. (For in depth information about the San Rafael Brewery’s colorful history, see <https://patch.com/california/sanrafael/history-san-rafael-brewery-produced-self-proclaimed-bbdc36859a4> )

Christie and Ron, who purchased the home in the late 1990’s, have lovingly and painstakingly restored it over the years, with much of the work being done by Ron and the interior design by Christie. Prior to her literary career, she owned a design firm and enjoyed working side by side with Ron on construction projects. Her first novel, “Woodacre” came out in 1998 and is, as she puts it “mostly autobiographical, although the names were changed to protect the innocent.” It takes place in the town she lived in during the 70’s and recreates an era that many of us remember fondly.

Christie also lived in Mill Valley in the days it was still affordable and retained a good measure of its bohemian past; her next book, “Dreaming Mill Valley,” moved away from the strictly autobiographical, but as she told the Marin IJ’s Vicki Larson in 2013, “I lived it” which explains how she captured the characters, the mood and the heritage of the community.

So she oversaw the creation of her next book, a hand bound chapbook, printed on letterpress at San Francisco Center for the Book. “My Moveable Feast”, illustrated by Fiona Taylor documents in short vignettes which Christie calls “a tribute to places and times gone by inspired by the memory of sensory delight.” After having learned the fine art of book making at Feather River Art Camp in the Sierras, Christie was eager to try her hand at a finished product.

Her latest effort, “Beautiful Illusion, Treasure Island, 1939,” scheduled to be released May 1st by She Writes Press, is a historical novel set on Treasure Island during the time of the Golden Gate International Exhibition of 1939, featuring pavilions from nations around the entire Pacific Rim. Her characters from far flung parts of the globe are entwined in suspense and romance amid the glitz and glamor of a majestic Fair with the theme of Peace and Brotherhood as the world heads into the dark days presaging the start of World War II. “Beautiful Illusion” will be introduced to Marin readers at a book signing party at Book Passage on May 19th at 7 PM.

Christie does most of her writing longhand on yellow legal pads, working in a small den overlooking downtown San Rafael and all the way to the Bay. She loves doing research for her novels and being swept along into the lives of her characters. She writes of both time and place, saying, “The time and place are just as much characters in my novels as the people are.” Time and place have come to life for her in this home. Ron has even found old beer bottles and other artifacts of that long ago period in San Rafael’s history. She has met descendants of both the Goerl and the Schmidt family, who brought her photographs of the Brewery in its heyday and even a beautiful piece of furniture once owned by Mrs. Goerl. Christie also writes a travel blog and speaks regularly at the Treasure Island Museum and other venues where history and book lovers gather. I left there wondering when we would be lucky enough to have our own book, made up the colorful characters of the San Rafael Brewery and other the historical figures of Gerstle Park. For more on Christie and her writings, see <http://www.christienelson.com/>



# Coffee With Katie

County Supervisor Katie Rice  
April 28th Gerstle Park Playground



All neighborhood residents are invited by our County Supervisor Katie Rice to come, have coffee and chat about whatever you have on your mind on Saturday April 28th from 10 to 11:30am. Topics might range from homeless to traffic/speeding to fire safety to sharing roads and trails (e.g. bikes, pedestrians) to flood control. Or it can be a more specific concern or idea that you may have. If this time frame doesn't work for you, but you'd still like to talk or meet one-on-one about a specific issue, please contact Supervisor Rice at [krice@marincounty.org](mailto:krice@marincounty.org) or call (415) 473-7825.

# GET READY Training

by Amy Likover



On March 3, 2018, San Rafael firefighters assisted with a GET READY training and safety event for the residents of the Gerstle Park neighborhood. SRFD members demonstrated "no touch" CPR, helping our team increase their chest compression rate and pressure. The firefighters also fielded our questions. There was a fantastic turnout of residents and the training presented by the firefighters was very well received.

Please contact [info@gerstlepark.com](mailto:info@gerstlepark.com) if you are interested in joining our group. We work together to keep the neighborhood safe in emergency situations.



# Albert Park Update

Renovations are under way!

Update from the B Team



Please excuse our mess! Albert Park is getting a new playground and this project will be on-going for the duration of 2018. If you'd like to know more about the project, or are interested in being a volunteer you can follow us here: <https://www.facebook.com/Bstbeautification/>

[facebook.com/Bstbeautification/](https://www.facebook.com/Bstbeautification/)

The B Team, GPNA, and The City of San Rafael are also committed to doing quarterly clean-ups of Albert Park. You can follow our Facebook page to learn when we are doing those.

The latest B Team benefit was done by Phil Lesh of Terrapin Crossroads where he played a 2-night-concert with proceeds going to the park. He called B Street the "crown jewel" of San Rafael and can't wait to see the park restored. The Terrapin Crossroads event brought in over \$8,000.00!

To date, The B Team has raised close to \$40,000 towards their goal of adding \$100,000 from the community, in addition to funds secured from the City of San Rafael. Donate to Make Albert Park Great! [www.livelifelocally.org/albert-park-playground-donations](http://www.livelifelocally.org/albert-park-playground-donations). Donations are tax-deductible.

# Federation of San Rafael Neighborhoods

by Tom Heinz

There is a lot going on in planning and development of San Rafael. A great source of information is the Federation of San Rafael Neighborhoods website at <https://www.fedsrn.org/>

There are a lot of links at this website. In particular, the agenda of the most recent meeting of March 8 contains links to current city development projects. Just follow the menu and click on meetings to find some current links. Explore the whole website, there is a lot there and it's a great way to get around the city website.

Current issues we should all be thinking about are how high we want buildings in the downtown and how much space should be allotted for pedestrians and bicyclists. Parking for new construction and traffic around the new construction is a major concern.



Do we want to prioritize automobiles or alternative forms of transportation? These are big questions we all need to be thinking about for our community and sharing our ideas with our Gerstle Park Neighborhood Association, our Federation of San Rafael Neighborhoods and our City Council.

## GPNA is Goin' Social

by Alicia diVittorio



Core to the GPNA's mission is to make sure every GPNA member, and everyone in the community can easily learn about the latest events, activities, and news that's going on in the neighborhood. To help get us closer to achieving our mission, I'm thrilled to announce the first ever official Gerstle Park blog and Facebook page.

By following the GPNA on Facebook, or following our blog, you'll get access to all the latest, official neighborhood news as soon as it's available. For those of you attached to the newsletter, don't worry! We'll continue publishing a quarterly newsletter. Just think of our blog and Facebook page as another avenue to get information about what's happening in the community.

Joining the Facebook group is super easy - simply go to [www.facebook.com/gerstleparkneighborhood/](http://www.facebook.com/gerstleparkneighborhood/), or search "Gerstle Park Neighborhood" on Facebook, and click on "Like" directly under main image.

To read the blog, visit. [www.gerstlepark.com/blog](http://www.gerstlepark.com/blog). Bookmark the page in your web browser so it's easy to check back at the blog regularly.

We hope you're as excited as we are!

## Annual Meeting Recap

by Denise Van Horn



Over 95 people attended the GPNA Annual Meeting on January 29th at the Elks Lodge. Delicious snacks and homemade desserts were provided by GPNA, and the slideshow, "2017: A Year in the Neighborhood" was shown to many oohs, ahhs and giggles. We have the cutest kids here in Gerstle Park!

Two very important announcements were made. The Mayor proclaimed December 4, 2018 "Hugo Landecker Day," and Cynthia Landecker (former board member and founding member of GPNA) presented a \$10,000 check bequeathed by Hugo Landecker, for the promotion of social activities in Gerstle Park.

Danielle Slonecker spoke about activities of The B-Team. Mayor Gary Phillips discussed homelessness, the success of the Smart Train, public services revamp, district elections, and development of cannabis policy. Bill Guerin, Director of Public Works commented on the sidewalk program, LED streetlights, extension of Smart Train to Larkspur and other topics. Matt Windrem of the Fire Department emphasized clearing brush and hardening your property for fire prevention and using Alert Marin to receive emergency announcements. Supervisor Katie Rice discussed fire preparedness and provided handouts about workshops. Police Chief Diana Bishop noted the Police Department is striving for a bigger presence on social media, to make citizens more aware of PD and what it does. She encouraged reporting of any crime and always locking your car and trunk. See 2016-2017 neighborhood crime stats presented by Chief Bishop on our [GPNA website](http://www.gpna.org).

## Board Members

Gina Silvestri, *President*  
Josselyn Robertson, *Vice President*  
Ross Parmenter, *Treasurer*  
Denise Van Horn, *Recording Secretary*  
Sandra Luna, *Corresponding Secretary*  
Tom Heinz, *Member*  
Alicia diVittorio, *Member*

## Treasurer's Corner

by Ross Parmenter

Balance (as of 12/31/2017): \$6,255.94

Expenses: \$919.59

Income: \$11,464.52\*

Balance (as of 03/5/2018): \$16,800.87

\*Includes donation of \$10,000 from Hugo Landecker Trust presented at Annual Mtg. MarinLink account (different bank acct., filming donations): \$9,810.00





# Gerstle Park

NEIGHBORHOOD ASSOCIATION

## Annual Membership Form

*Membership year runs from January 1<sup>st</sup> - December 31<sup>st</sup>*  
One Vote Per Individual - \$20/year (\$10 seniors age 65+)

Please complete the information below and return with your check to:  
GPNA, P.O. Box 150644, San Rafael CA, 94915-0644

**Renew your membership online at [www.gerstlepark.com](http://www.gerstlepark.com)!**

NEW MEMBER     RENEWAL

Name: \_\_\_\_\_ Phone: \_\_\_\_\_

Address: \_\_\_\_\_ Cell: \_\_\_\_\_

Email Address: \_\_\_\_\_ Date: \_\_\_\_\_

all GPNA correspondence is via email

Payment Type:     CHECK     CASH                      TOTAL ENCLOSED: \$ \_\_\_\_\_

Interested in volunteering for the following events or committees?

If so, please indicate with one or more checks.

Descriptions can be found on our website, [www.gerstlepark.com](http://www.gerstlepark.com).

COMMITTEES

- Ready Gerstle Park, Emergency Preparedness
- Community Tree Committee
- Open Space Committee – weeding of invasive species (French Broom) in neighborhood open space, Nov-May
- Food Committee - help with planning, preparation & service for GPNA events

EVENTS includes planning, decorating, helping day-of:

- Fall Picnic
- Christmas Caroling
- Garage Sale
- Halloween Decorating Contest (judging)
- Spring Fling Egg Hunt

NEIGHBORHOOD ADVOCACY IN SAN RAFAEL

- City Planning
- Homelessness issue
- Large Group Home Regulation(s) Committee
- Parks
  - Gerstle Park     Albert Park
- Zoning enforcement

NEWSLETTER Quarterly

- Distribution
- Editing
- Graphic Design

PHOTOGRAPHY

WEBSITE

Welcome to the GPNA!

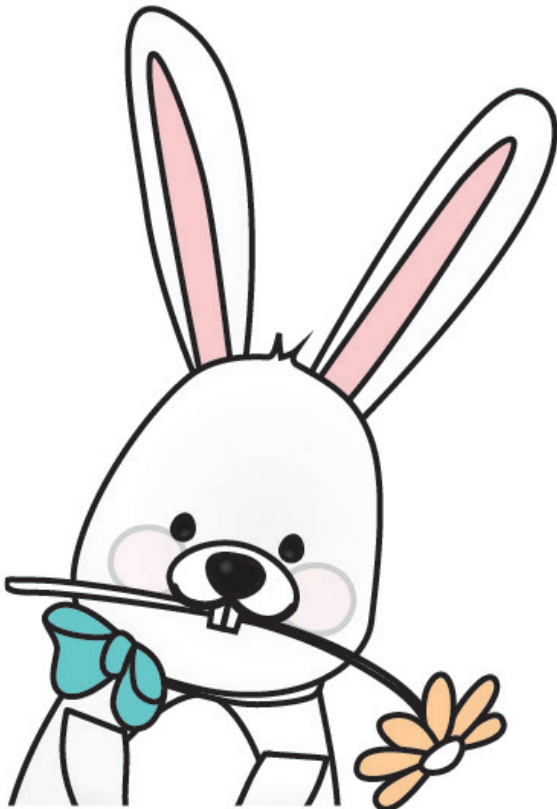
# SPRING FLING



SAT 3|24

## EGG HUNT

For kids under 9  
10am sharp start!



GERSTLE  
PARK  
PLAYGROUND

- \* Egg Dyeing
- \* Golden Egg Prizes
- \* Muffins + Coffee



A free community event hosted by your

**NEIGHBORHOOD  
ASSOCIATION**