



READY, SET, STOP!

We hope everyone already heard the news that this will be the last hand-delivered Gerstle Park newsletter until Winter 2007. The GPNA Board's goal to provide excellent service to the neighborhood through a great newsletter, a large membership, and many other activities, is coming to fruition, based on your feedback. In the last two months GPNA membership has nearly doubled!

Going forward, the newsletter will be mailed to active GPNA members and available to non-members in convenient locales such as Muffin Mania and the park. So this newsletter in your hands now is the last of our regularly home-delivered issues, unless you are a GPNA member. Expect to be visited by a friendly elf who would love a few minutes of your time to learn your thoughts about Gerstle Park these days. These folks are our new volunteer ambassadors, responsible for gathering and sharing information with their part of the neighborhood. With their visit, you will be given a chance to join or renew your membership for 2007.

We hope you will all join the GPNA! Think about the power and possibility of having 1600+ members of the GPNA! Let your neighborhood ambassador know why, should you choose not to sign up. We are interested! Okay, that's it for now. Consider this the last of the great alerts on this subject. Happy Holidays! We are looking forward to a united, effective and power-packed new year.

COME ONE, COME ALL

Holiday Caroling on December 13TH, 6-8:00 pm

Join the festive carolers as they serenade the neighborhood! Bring the family and flashlights; dress warmly and come out for a night of holiday cheer. We will meet at the Panama Hotel at the foot of B Street at 6:00 pm for voice warm up, hot apple cider, and cookies.

Songbooks will be distributed, so no one will be at a loss for lyrics! If there's light rain, we're still a go; just bring an umbrella and dress accordingly. If we have a heavy rain, we will reschedule for December 15th, same time, same place.

We are still seeking our lead caroler for the event. If you would like to lend your experience and cheer to get the group started and keep them going, please contact Tim Firman: Tim.Firman@gerstlepark.com

GPNA ANNUAL MEETING AND BOARD OF DIRECTORS ELECTIONS

**Save the Date! Thursday, January 25TH, 7:00 PM
at the B Street Community Center**

2007 is just around the corner and so is GPNA's Annual Meeting. Mark your calendars and plan to attend this important meeting. A "business meeting" may not entice you, but we encourage you to attend, meet your neighbors, have a say in neighborhood planning and it will be fun! We plan to have a guest presentation of relevance to our neighborhood as well.

Finally, it's the perfect opportunity to meet nominees for the four Board of Director vacancies and cast your vote. It's invaluable for the GPNA Board to be diverse, cohesive and able to work together on behalf of the neighborhood. Your GPNA membership must be current to vote in the election and can be paid at the meeting.

On the topic of nominees, if you've never been part of the Board, or if it's been awhile since you've served, please consider joining! The Board represents a variety of interests, passions and levels of participation. Anyone over 18, a Gerstle Park resident, and a current GPNA member can be nominated. Board members are committed to neighborhood improvement, attend meetings on the first Thursday of each month, and participate in our activities. The GPNA has many undertakings and there's room for just about any talent. Interests in event planning, historic preservation, membership outreach, traffic, administration, fund raising, city policy, and open space are all examples of areas we work on.

If you, or someone you know fits the bill, please email tymber@gerstlepark.com and we'll follow-up. Nominations will be accepted from the floor, however, known nominees will have short bios included in the Member Voting package that goes out in advance, and introduction time at the meeting.

Gerstle Park is a **GREAT** place to live and the GPNA works hard to maintain and enhance the traits that make our neighborhood so desirable. It's the board and volunteers, i.e. YOU that determine our level of success. Please consider serving on the Board of Directors, and attend the Annual Meeting on January 25th.





HAUNTED HOMES OF GERSTLE PARK

What a fabulous Halloween! Under a half-moon, the neighborhood welcomed trick-or-treaters and many strollers admiring the specially decorated haunted homes. As usual, choosing winners for the prizes was a difficult decision for the Board members as there were so many awesome decorations. We did our best and here's the winners:

Grand Prize Winner

217 Bayview - Monster House; the most creative, original and haunting masterpiece in the neighborhood. Evil eminence reigned!

Spectacular Spiders

1st Place: 222 Bayview
2nd Place: 4 Octavia

Demon's Delight/Creepiest

1st Place: 51 Clorinda
2nd Place: 362 Clorinda
3rd Place: 119 Clark & 40 Pleasant Lane

Cemetery Celebration

1st Place: 51 Woods
2nd Place: 231 Bayview
3rd Place: 101 Marin

Best Pumpkins

1st Place: 239 Bayview
2nd Place: 104 Clark

Best Halloween Parties (Dead or Alive)

1st Place: 21 Woods
2nd Place: 508 D
3rd Place: 153 Ross

Honorable Mention

127 C St
21 Marin St.
14 Clark

First Place winners will receive a 2-pack movie combo from Century Theaters and the Grand Prize winner will receive a family 4 pack to the movies and \$50.00 certificate to Applebees. It was great to see many neighbors gathering together to trick and treat as a group. A huge THANK YOU to everyone who participated and made this a wonderful evening for the young and the young-at-heart.



NEIGHBORHOOD CLEAN UP A BRIGHT SUCCESS

It was a fine day in Gerstle Park and at least 25 volunteers spent a few hours cleaning up the neighborhood. There was a team on the creek close to E Street, another team cleaned the areas along First Street, and other individuals cleaning entire streets and gutters of litter and leaves. One volunteer had a garbage bag full with cigarette butts after just two hours. By noon, the dumpster at the park was filled to the brim. Many thanks to all volunteers, CenterPoint, Marin Sanitary, and Cory Bytof, the City Volunteer Coordinator. We will do this again next spring, in the meantime; remember to help keep our beautiful neighborhood clean!



FLOOD TIPS

Winter brings holiday fun, brisk weather and rain. Here are a few tips to help avoid neighborhood flooding.

Parking: To allow water and debris to flow freely, park at least 10" away from the curb. B, C, and D streets do not have storm drains, so clear gutters on these streets are extra important. Never park over a storm drain.

Leaves Leaves Leaves: Rain washes all debris and leaves to the drains, clogging the grates and causing flooding. The city will be vacuuming leaves and street sweeping through the winter. A tentative street sweeper schedule is posted here:

www.cityofsanrafael.org/Government/Public_Works/Operations_and_Maintenance/Streets_Sweeping.htm

It is far more effective for us to clear our own leaves by putting them in the green cans. There is no charge to fill two extra cans, up to 32 gallons and 50 pounds each. Call Marin Sanitary at 456-2601 to let them know you have extra cans. When raking leaves for the street sweeper, put them in a long line, on the street side of parked cars and the sweeper will be better able to get them.

Sand Bags help slow down water but don't stop it. If you are putting them up against a door, first lay a piece of plastic down and pile the bags on top. Currently there are sand bagging stations at the Fire stations across from Montecito shopping center and Point San Pedro. Prepare your sandbags at the beginning of the

rainy season so you don't have to go out in a storm.

Neighbor watch: If the flooding looks bad let your neighbors know by calling, knocking on doors, or if cars need to be moved, honk your horn three times, pause, and then three times again.

Pumping: Many pumps have a minimum depth before they can work, but it's a good idea to start pumping as soon as possible. To get your pump working right away, place it in a bucket full to the depth needed by the pump.

Power Outages: Keep flashlights and batteries ready around the house. Store generators high above potential flood lines.

Safe storage: Although plastic containers are a good idea, some found when the water got deep, the darn containers started floating and if top heavy, they tipped over, even when full of heavy items like tools. Store the bins above potential water lines, tie them down, pack them heavy or don't be too surprised to see your items floating by.

When water gets in: A carpet-cleaning machine is quite good helping dry the remaining water. If water gets inside your car, dry as much as you can with a towel and then an iron can help steam out the rest.

See the phone list later in this newsletter for emergency numbers.

Attention Gerstle Park Neighbors!!! FINAL NOTICE!!!



PLEASE NOTE: This is the **last newsletter** that will be hand distributed to non-members.

Beginning next year, the newsletter will be **mailed to current members only**. Copies of the newsletter will be available for pick-up at Muffin Mania and at the Bulletin Board/Kiosk at the park.

To continue receiving the newsletter, and to be a jolly good member of the community ☺, please fill out the membership application on the back of this notice and return it along with your dues in the attached envelope.

The more paying members we have, the more clout we have with the city and the more improvements and activities we can initiate to make our neighborhood even better than it already is!

HAPPY HOLIDAYS & A PROSPEROUS, HEALTHY NEW YEAR!!



TRAFFIC WATCH

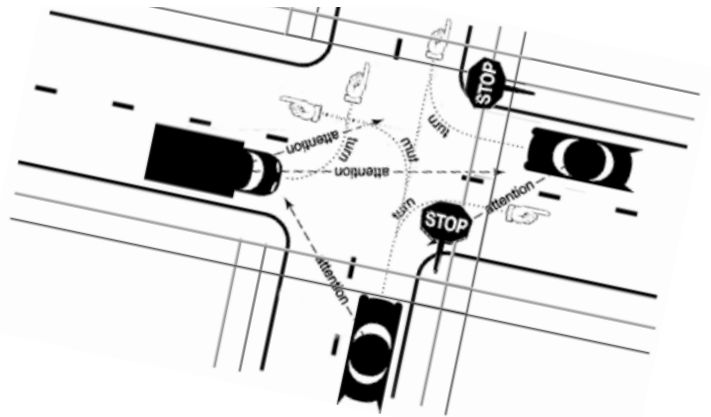
For the last 18 months, the GPNA traffic committee has been working on a list of specific traffic issues and potential solutions. For years, the intersection of First and C Streets has been on our list as the most troublesome intersection in the neighborhood. It is confusing and dangerous for drivers and pedestrians. The GPNA has pushed the city to restore upper D Street to a two-way street and stop detouring traffic down First Street.

When City planners failed to respond, committee members successfully lobbied for additional signage at the intersection to indicate that oncoming traffic does not stop. The signs offered some improvement but the frightening, tragic accident that took place at this intersection in September reiterates this intersection is still unnecessarily dangerous. It's very sad that it took a young child getting injured on her way to catch a school bus, to get the City to start listening.

The City's proposal to fix the unsafe intersection is to install new traffic lights at First and D Street and First and C Street. This is a residential neighborhood and the neighbors oppose traffic lights around their homes. The cost of installing the lights is estimated to be around \$500,000, which we think could be better spent on other traffic calming and safety measures in Gerstle Park.

Residents formed a protest a group, The Neighborhood Traffic Alliance (NTA) staged two successful protests and a march to address the City Council. The GPNA Traffic Committee and the NTA met with San Rafael City Manager, Ken Nordhoff and expressed our strong opposition to the traffic lights. We proposed a trial of returning D Street to a two-way street. We were told it is under consideration and that we would be kept informed on the scope and progress of the current traffic study. Updates will be on www.gerstlepark.com in emails and the newsletter.

It will take neighborhood participation to get positive results in terms of traffic calming for Gerstle Park, and it is likely a long-term effort that will require sustained interest. Anyone interested in learning more about this issue should contact Dan Miller, Dan.Miller@GerstlePark.com



2007 Gerstle Park Neighborhood Association (GPNA) Membership Form

Please complete the information below and return with your check to:
GPNA, P.O. Box 150644, San Rafael, CA 94915-0644

Membership Year Runs from January 1st through December 31st

Individual: One Voting Member: \$15.00 (\$10.00 Seniors Age 65 or Older)

Household: Two Voting Members: \$20.00 (\$15.00 Seniors)

New Member ♦ Renewal

Gerstle Park T-SHIRTS: Child & Adult \$15ea.

Quantity

Size

Additional Donation: \$ _____

Total Enclosed: \$ _____

Name: _____

Phone: _____

Address: _____

Email Address: _____

Date: _____

Do you wish to receive our quarterly newsletter via email instead of home delivery?

Yes ♦ No

Are you interested in volunteering?

Yes ♦ No

A BIT OF SAN RAFAEL HISTORY

Contributed by 91-year old resident, Lee Avedano

Pietro (Peter) Canziani left his hometown, Lonato Pozzolo, Italy in the mid 1800s and arrived in San Rafael at the age of 23. Soon after his arrival he went to work for McNears Brickyard, as did many immigrants. He saved his money and bought property in the Gordon tract, now the corner of B Street and Taylor. There was a small cottage on the property that he had raised and extended to make a roomy store below and an apartment upstairs. By 1907 he opened a butcher and grocery shop and built a barn, which still stands, for the horses he used for deliveries. In summer he pastured the horses at what is now Albert Field, known then as The Marsh because it always flooded during the winter months. He had a cottage built on his property that was used to house immigrants from Italy.

Peter married about 1905 and his son Norm was born in 1907. The store thrived with his helpers, George Strecfkus and his nephew Anthony Canziani. The family lived above the store and in 1914, his daughter Lena Elizabeth (Lee) was born. After several years of running the store, he decided to get into wholesale butchering. Peter purchased property adjacent to where Smith Ranch road is now and built a slaughterhouse. Meanwhile his nephew Anthony took over the grocery and butcher shop with Charles Giudici. Mr. Canziani died in 1928 and his son Norm took over the wholesale butchering business. The shop was managed by Anthony Canziani, Charles Giudici, Anthony Taveggia and Pete Bisaro and continued to flourish until it was closed in 1963, after 56 years in business.

Mrs. Canziani lived in the apartment above the store until 1970 when she passed away at the age of 87. Peter Canziani's daughter, Lee married Louis Avedano in 1938. For nine years they lived in the cottage her father had built for the Italian immigrants. After their son David was born, they had their own home built on the site of the family vegetable garden at 4 Taylor Street and moved into their new home in 1951. Lee lives there presently with her son David. Lee remembers playing in the creek with friends and gathering stickle fish and pollywogs. It was much cleaner than it is now. One year there was an invasion of carp, a fish that was prized by

the Oriental people. When word got around that the carp had arrived, many of the Orientals who worked in the D Street laundry came down to B Street with baskets to gather the fish.

Lee says that every year they looked forward to Halloween. She and others had a standing invitation to Miss Davidson's home to enjoy games such as duck for the apple. Miss Davidson was then principal of Short School, Lee believes. Lee also says that it never failed when they were on their way home, the older boys would jump out from behind the bushes and scare them half to death.

ANNUAL PICNIC

In September, GPNA had another successful Annual Picnic, with a lot of wonderful food, good weather, and an opportunity to renew neighborhood acquaintanceships in Gerstle Park's beautiful Redwood Grove. Special guests included San Rafael Mayor Al Boro and Councilman Cyr Miller.

We were blessed by the cool tunes of the band Swing Fever and by a group of dedicated volunteers, headed by Hugo Landecker who all worked hard to pull all the logistics together. Supplementing GPNA's traditional free hot dogs and chili were, neighbors contributed delicious side dishes and dessert.

Some of us who were at GPNA's very first picnic over 30 years ago note that we find it a little more difficult each year to get up the hill to our beautiful picnic site. But we will keep coming back. **See you next year!**





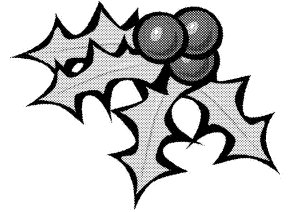
CALENDAR:


- Thurs, Dec 7** Monthly Board Meeting*
- Thurs Dec 13** Holiday Caroling
- Dec 18-25** Christmas Decorating Contest
- Jan. 25, 2007** Annual GPNA Board Meeting

* Guests are Welcome! If you desire to address the GPNA Board of Directors, wish to attend a meeting or need more information on Gerstle Park Events or Community Meetings, below, please contact Tim Firman at 415-456-1365 or Tymber Cavasian via email: tymber@gerstlepark.com

CHRISTMAS DECORATING CONTEST

In follow-up to the fun, creative Halloween decorations we saw this year, it's time to deck your halls, porches, and yards, for the Annual Christmas Decorating Contest. The judges will have the fun job of walking the neighborhood and casting their votes between December 18th and 25th. Let's make the whole neighborhood glow!





GPNA Quarterly Newsletter 2006
 Number 4 of 4 (Winter)
All articles written by GPNA members.
 Editor: Lisa Fait • Layout: Ken Goudey
 Reproduction by The Copy Shop & Printing Company
 at a cost of approximately \$550 /1600 copies.

WHO TO CALL LIST

Abandoned Vehicles	485-3033	Litter	485-3407
Building Inspect./permits	485-3365	Marin General Hospital	925-7000
Business License	485-3051	Marin IJ	883-8600
Center Point Liason	456-3036	Marin Recycling	453-1404
City Attorney	485-3080	Marin Sanitary Service	456-2601
City Clerk	485-3066	MMWD	945-1455
City Manager	485-3070	MMWD Emergency	945-1500
Chamber of Commerce	454-4163	Parking Issues	485-5333
Code Enforcement	458-5038	Parks Department	485-3355
Comcast	459-5333	PG&E	800-743-5000
Community Center	485-3333	Planning Department	485-3085
Community Development	485-3085	Police Department	485-3000
Community Policing	485-3114	Potholes	485-3355
Dangerous Animals	309-6339	Public Library	485-3323
Design Review	485-3085	Public Works	485-3355
Drainage Problems	485-3355	Public Works Emergency	485-3385
Earthquake Supply Center	459-5500	San Rafael Chamber of Commerce	454-4163
Emergency Operations Coordinator	485-3475	Sewers	485-3375
Fire Chief	485-3304	Street Maintenance	485-3375
Graffiti Hotline	485-5326	Tenant/Landlord Disputes	499-7454
Hazardous Material	485-3308	Traffic Unit	485-3034
Illegal Construction	485-3365	Tree Removal (street trees)	485-3375

Go to www.cityofsanrafael.org for additional helpful information